



TRIDON

CATALOGO CAMLOCK CAMLOCK CATALOGUE



CLAMP.IT | +39 02 9803211



Support. Secure. Connect.

INDICE / INDEX

Indice / Index.....	3
Descrizione Prodotto / Product Description.....	4
Informazioni Tecniche / Technical Information.....	5
Products	
Camlock Type A.....	6
Camlock Type B.....	7
Camlock Type C.....	8
Camlock Type D.....	9
Camlock Type E.....	10
Camlock Type F.....	11
Camlock Type DC.....	12
Camlock Type DP.....	13
Semi-Gusci EN14420-3 (DN 2817) / Safety Clamps EN14420-3 (DN 2817).....	14
Altri Prodotti Disponibili Su Richiesta / Other Products Available Upon Request.....	15
Accessori / Accessories.....	16
Tridon EMEA.....	17
Notes.....	18-19
www.clamp.it.....	20

DESCRIZIONE PRODOTTO

PRODUCT DESCRIPTION

L'accoppiamento rapido dato dal sistema CAMLOCK presenta molti vantaggi ed é utilizzato da molte industrie. E' realizzato in 2 parti, maschio e femmina e non richiede l'utilizzo di nessun utensile per il bloccaggio e lo sbloccaggio.

I raccordi CAMLOCK sono stati studiati per il passaggio di liquidi e per ottenere un collegamento sicuro tra due tubazioni nel minor tempo possibile.

La temperatura d'esercizio é determinata dal tipo di guarnizione utilizzata ma si consiglia di utilizzare il sistema CAMLOCK a temperatura ambiente e non superiore ai 60C.

Le specifiche di questo sistema rispettano lo standard militare MIL-C-27487 il quale indica le procedure relative al processo di fabbricazione, dei materiali, delle dimensioni, delle tolleranze e delle pressioni di impiego.

The quick coupling given by the CAMLOCK system has many advantages and is used by many industries. It is made in 2 parts, male and female, and does not require the use of any tool for locking and unlocking.

CAMLOCK fittings have been designed for the passage of liquids and to obtain a safe connection between two pipes in the shortest possible time.

The working temperature is determined by the type of gasket used but it is recommended to use the CAMLOCK system as room temperature and not higher than 60C.

The specifications of this system comply with the military standard MIL-C-27487 which indicates the procedures of the manufacturing process, materials, dimensions, tolerances, and working pressures.

INFORMAZIONI TECNICHE

TECHNICAL INFORMATION

MATERIALI/MATERIALS

AISI 316 / ASTM A 351 CF8M / EN 14408/1

*AISI 304 / ASTM A 276-986 / EN 1.4301

ALLUMINIO / ALUMINUM

OTTONE / BRASS

*POLIPROPILENE / POLYPROPYLENE

*SU RICHIESTA / ON REQUEST

DIMENSIONI/DIMENSIONS

DAL 1/2" AL 6" / FROM 1/2" TO 6"

8" POLLICI SU RICHIESTA / 8" ON REQUEST

FILETTATURE/THREAD

NPT - BSPP - BSPT

GUARNIZIONI/GASKETS

NBR, EPDM, Viton, Silicone

PRESSIONE D'ESERCIZIO/WORKING PRESSURE

MATERIAL	SIZE	1/2"	3/4"- 2"	2-1/2"	3"	4"	5-6"
AISI 316 / SS316	PSI	150	250	225	200	105	105
	BAR	10	17	15	13	7	7
ALLUMINIO / ALUMINUM	PSI	150	250	160	130	105	75
	BAR	10	17	11	9	7	5

CAMLOCK TYPE A

RACCORDO MASCHIO FILETTATO FEMMINA / FITTING TYPE WITH FEMALE THREAD



DN mm	DIMENSIONE POLLICI SIZE (IN)	CODICE / PART NUMBER SS316	CODICE / PART NUMBER Alluminio / Aluminum	CODICE / PART NUMBER Ottone / Brass
13	1/2"	TRCA050SS316CL	TRCA050ALCL	TRCA050BRCL
20	3/4"	TRCA075SS316CL	TRCA075ALCL	TRCA075BRCL
25	1"	TRCA100SS316CL	TRCA100ALCL	TRCA100BRCL
32	1-1/4"	TRCA125SS316CL	TRCA125ALCL	TRCA125BRCL
40	1-1/2"	TRCA150SS316CL	TRCA150ALCL	TRCA150BRCL
50	2"	TRCA200SS316CL	TRCA200ALCL	TRCA200BRCL
65	2-1/2"	TRCA250SS316CL	TRCA250ALCL	TRCA250BRCL
80	3"	TRCA300SS316CL	TRCA300ALCL	TRCA300BRCL
100	4"	TRCA400SS316CL	TRCA400ALCL	TRCA400BRCL
125	5"	TRCA500SS316CL	TRCA500ALCL	TRCA500BRCL
150	6"	TRCA600SS316CL	TRCA600ALCL	TRCA600BRCL
200	8"	*TRCA800SS316CL	*TRCA800ALCL	-

*Su richiesta / on request

Tipo Type		Dimension									
		Size (mm)	1/2'	3/4'	1'	1-1/4'	1-1/2'	2'	2-1/2'	3'	4'
A	L1	32.5	34.5	41.5	51.5	53.5	61.5	77	67	71	82.5
	L2	25	26.5	31.5	39	41.5	48	46.5	50	50	57
	A1	24.5	23	26	31	39.5	48	62.5	75	102	154
	A2	23.84	32.1	36.8	45.1	53.3	63	75.8	91.5	119.5	176

CAMLOCK TYPE B

RACCORDO FEMMINA FILETTATA MASCHIO / FEMALE COUPLER X MALE THREAD



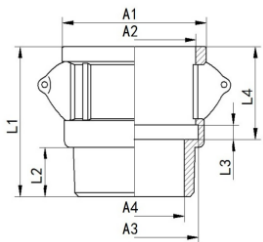
DN mm	DIMENSIONE POLLICI SIZE (IN)	CODICE / PART NUMBER SS316	CODICE / PART NUMBER Alluminio / Aluminum	CODICE / PART NUMBER Ottone / Brass
13	1/2"	TRCB050SS316CL	TRCB050ALSSCL	TRCB050BRCL
20	3/4"	TRCB075SS316CL	TRCB075ALSSCL	TRCB075BRCL
25	1"	TRCB100SS316CL	TRCB100ALSSCL	TRCB100BRCL
32	1-1/4"	TRCB125SS316CL	TRCB125ALSSCL	TRCB125BRCL
40	1-1/2"	TRCB150SS316CL	TRCB150ALSSCL	TRCB150BRCL
50	2"	TRCB200SS316CL	TRCB200ALSSCL	TRCB200BRCL
65	2-1/2"	TRCB250SS316CL	TRCB250ALSSCL	TRCB250BRCL
80	3"	TRCB300SS316CL	TRCB300ALSSCL	TRCB300BRCL
100	4"	TRCB400SS316CL	TRCB400ALSSCL	TRCB400BRCL
125	5"	TRCB500SS316CL	TRCB500ALSSCL	TRCB500BRCL
150	6"	TRCB600SS316CL	TRCB600ALSSCL	TRCB600BRCL
200	8"	*TRCB800SS316CL	*TRCB800ALSSCL	-

*Su richiesta / on request

Versione in alluminio con leve in SS / Aluminum version with SS handles

Guarnizione di fornitura: NBR / Supply gasket: NBR

Tipo Type	Dimension	Dimension										
		Size (mm)	1/2'	3/4'	1'	1-1/4'	1-1/2'	2'	2-1/2'	3'	4'	6'
B	L1	44	46	55	60.5	68	73	85	82	88	106	
	L2	15.5	16	19	20	24	24.5	31.5	28	31	39	
	L3	4.5	6.35	6.5	7.14	7.14	7.14	7.14	7.14	7.14	9.5	
	L4	25.5	27	33	38	41	45	49	49	48	61	
	A1	33.5	40.5	46.5	55	63.5	73.5	88	104.5	134.5	195	
	A2	24.5	32.7	37.8	46	54	64	76.8	92.2	120.5	177	
	A3	26	36.12	38.5	50.8	57.2	66	78	96	124	181	
	A4	15	20	26	34	39	51	63.5	76	103	149	



CAMLOCK TYPE C

RACCORDO FEMMINA CON PORTAGOMMA / FEMALE COUPLER X HOSE SHANK



DN mm	DIMENSIONE POLLICI SIZE (IN)	CODICE / PART NUMBER SS316	CODICE / PART NUMBER Alluminio / Aluminum	CODICE / PART NUMBER Ottone / Brass
13	1/2"	TRCC050SS316CL	TRCC050ALSSCL	TRCC050BRCL
20	3/4"	TRCC075SS316CL	TRCC075ALSSCL	TRCC075BRCL
25	1"	TRCC100SS316CL	TRCC100ALSSCL	TRCC100BRCL
32	1-1/4"	TRCC125SS316CL	TRCC125ALSSCL	TRCC125BRCL
40	1-1/2"	TRCC150SS316CL	TRCC150ALSSCL	TRCC150BRCL
50	2"	TRCC200SS316CL	TRCC200ALSSCL	TRCC200BRCL
65	2-1/2"	TRCC250SS316CL	TRCC250ALSSCL	TRCC250BRCL
80	3"	TRCC300SS316CL	TRCC300ALSSCL	TRCC300BRCL
100	4"	TRCC400SS316CL	TRCC400ALSSCL	TRCC400BRCL
125	5"	TRCC500SS316CL	TRCC500ALSSCL	TRCC500BRCL
150	6"	TRCC600SS316CL	TRCC600ALSSCL	TRCC600BRCL
200	8"	*TRCC800SS316CL	*TRCC800ALSSCL	-

*Su richiesta / on request

Versione in alluminio con leve in SS / Aluminum version with SS handles

Guarnizione di fornitura: NBR / Supply gasket: NBR

Tipo Type	Dimension	Dimension										
		Size (mm)	1/2'	3/4'	1'	1-1/4'	1-1/2'	2'	2-1/2'	3'	4'	6'
C	L1	71	81	95	102	110	133	133	150	168	190	
	L2	27	30	36	41	44	48.5	52.5	52.5	52.5	61	
	L3	14	16	18	21	21	32.5	28	34	45	52	
	L4	7	9	9	9	9	9.5	10	13	13	17	
	L5	4.5	6.35	6.5	7.14	7.14	7.14	7.14	7.14	7.14	9.5	
	L6	25.5	27	33	38	41	45	49	49	48	55	
	A1	33.5	40.5	46.5	55	63.5	73.5	88	104.5	134.5	196	
	A2	24.5	32.7	37.8	46	54	64	76.8	92.2	120.5	177	
	A3	26	36.12	38.5	50.8	57.2	66	78	96	124	181	
	A4	9	15.5	20	27	34	46	60	70	92	144	
	A5	14	20	27	33	40.5	53.5	65	78	103	156	
	A6	13	19	25	31.5	38	51	67.5	76	99	153	

CAMLOCK TYPE D

RACCORDO FEMMINA FILETTATA FEMMINA / FEMALE COUPLER X FEMALE THREAD



DN mm	DIMENSIONE POLLICI SIZE (IN)	CODICE / PART NUMBER SS316	CODICE / PART NUMBER Alluminio / Aluminum	CODICE / PART NUMBER Ottone / Brass
13	1/2"	TRCD050SS316CL	TRCD050ALSSCL	TRCD050BRCL
20	3/4"	TRCD075SS316CL	TRCD075ALSSCL	TRCD075BRCL
25	1"	TRCD100SS316CL	TRCD100ALSSCL	TRCD100BRCL
32	1-1/4"	TRCD125SS316CL	TRCD125ALSSCL	TRCD125BRCL
40	1-1/2"	TRCD150SS316CL	TRCD150ALSSCL	TRCD150BRCL
50	2"	TRCD200SS316CL	TRCD200ALSSCL	TRCD200BRCL
65	2-1/2"	TRCD250SS316CL	TRCD250ALSSCL	TRCD250BRCL
80	3"	TRCD300SS316CL	TRCD300ALSSCL	TRCD300BRCL
100	4"	TRCD400SS316CL	TRCD400ALSSCL	TRCD400BRCL
125	5"	TRCD500SS316CL	TRCD500ALSSCL	TRCD500BRCL
150	6"	TRCD600SS316CL	TRCD600ALSSCL	TRCD600BRCL
200	8"	*TRCD800SS316CL	*TRCD800ALSSCL	-

*Su richiesta / on request

Versione in alluminio con leve in SS / Aluminum version with SS handles

Guarnizione di fornitura: NBR / Supply gasket: NBR

Tipo Type	Dimension	Dimension										
		Size (mm)	1/2'	3/4'	1'	1-1/4'	1-1/2'	2'	2-1/2'	3'	4'	6'
D	L1	43.5	45	54.5	60.5	65	73	80	83	87	99	
	L2	14.5	14.5	18	20	21	24	27	30	34	36	
	L3	4.5	6.35	6.5	7.14	7.14	7.14	7.14	7.14	7.14	9.5	
	L4	25.5	27	33	38	41	45	49	49	48	55	
	A1	33.5	40.5	46.5	55	63.5	73.5	88	104.5	134.5	195	
	A2	24.5	32.7	37.8	46	54	64	76.8	92.2	120.5	177	
	A3	26	36.12	38.5	50.8	57.2	66	78	96	124	181	
	A4	14	20	25	35	40	51	61.5	76.5	102	152	

CAMLOCK TYPE E

RACCORDO MASCHIO CON PORTAGOMMA / MALE ADAPTER X HOSE SHANK



DN mm	DIMENSIONE POLLICI SIZE (IN)	CODICE / PART NUMBER SS316	CODICE / PART NUMBER Alluminio / Aluminum	CODICE / PART NUMBER Ottone / Brass
13	1/2"	TRCE050SS316CL	TRCE050ALCL	TRCE050BRCL
20	3/4"	TRCE075SS316CL	TRCE075ALCL	TRCE075BRCL
25	1"	TRCE100SS316CL	TRCE100ALCL	TRCE100BRCL
32	1-1/4"	TRCE125SS316CL	TRCE125ALCL	TRCE125BRCL
40	1-1/2"	TRCE150SS316CL	TRCE150ALCL	TRCE150BRCL
50	2"	TRCE200SS316CL	TRCE200ALCL	TRCE200BRCL
65	2-1/2"	TRCE250SS316CL	TRCE250ALCL	TRCE250BRCL
80	3"	TRCE300SS316CL	TRCE300ALCL	TRCE300BRCL
100	4"	TRCE400SS316CL	TRCE400ALCL	TRCE400BRCL
125	5"	TRCE500SS316CL	TRCE500ALCL	TRCE500BRCL
150	6"	TRCE600SS316CL	TRCE600ALCL	TRCE600BRCL
200	8"	*TRCE800SS316CL	*TRCE800ALCL	-

*Su richiesta / on request

Tipo Type		Dimension									
		Size (mm)	1/2'	3/4'	1'	1-1/4'	1-1/2'	2'	2-1/2'	3'	4'
E	L1	73	87	98	113	114.5	144	141	159	179	197
	L2	23	25	27	36	38	45	46	47	44	52
	L3	40	51	59	61	66	84.5	80.5	97.5	115.5	122.5
	L4	7	9	9	9	9	9.5	10	13	13	17
	L5	14	16	18	21	21	32.5	28	34	45	46
	A1	23.84	32.1	36.8	45.1	53.3	63	75.8	91.5	119.5	176
	A2	15	23	25	34	39	48.5	63	76	103	154
	A3	9	15.5	20	27	34	46	60	70	92	145
	A4	13	19	25	31.5	38	51	67.5	76	99	154

CAMLOCK TYPE F

RACCORDO MASCHIO FILETTATO MASCHIO / MALE ADAPTER X MALE THREAD



DN mm	DIMENSIONE POLLICI SIZE (IN)	CODICE / PART NUMBER SS316	CODICE / PART NUMBER Alluminio / Aluminum	CODICE / PART NUMBER Ottone / Brass
13	1/2"	TRCF050SS316CL	TRCF050ALCL	TRCF050BRCL
20	3/4"	TRCF075SS316CL	TRCF075ALCL	TRCF075BRCL
25	1"	TRCF100SS316CL	TRCF100ALCL	TRCF100BRCL
32	1-1/4"	TRCF125SS316CL	TRCF125ALCL	TRCF125BRCL
40	1-1/2"	TRCF150SS316CL	TRCF150ALCL	TRCF150BRCL
50	2"	TRCF200SS316CL	TRCF200ALCL	TRCF200BRCL
65	2-1/2"	TRCF250SS316CL	TRCF250ALCL	TRCF250BRCL
80	3"	TRCF300SS316CL	TRCF300ALCL	TRCF300BRCL
100	4"	TRCF400SS316CL	TRCF400ALCL	TRCF400BRCL
125	5"	TRCF500SS316CL	TRCF500ALCL	TRCF500BRCL
150	6"	TRCF600SS316CL	TRCF600ALCL	TRCF600BRCL
200	8"	*TRCF800SS316CL	*TRCF800ALCL	-

*Su richiesta / on request

Tipo Type		Dimension									
		Size (mm)	1/2'	3/4'	1'	1-1/4'	1-1/2'	2'	2-1/2'	3'	4'
F	L1	47	46.5	59	67	71	85	81	92.5	103	115
	L2	25	24	32	38	39	48	45	48	50	57.5
	L3	15	14	18	19	21	25	23	27	31	38
	A1	23.84	32.1	36.8	45.1	53.3	63	75.8	91.5	119.5	176
	A2	15	23	26	35	38	49	64	76	103	154
	A3	14.5	21	26	35	39	50	63	75	103	154

CAMLOCK TYPE DC

TAPPO FEMMINA / DUST CUP



DN mm	DIMENSIONE POLLICI SIZE (IN)	CODICE / PART NUMBER SS316	CODICE / PART NUMBER Alluminio / Aluminum	CODICE / PART NUMBER Ottone / Brass
13	1/2"	TRCDC050SS316CL	TRCDC050ALSSLCL	TRCDC050BRCL
20	3/4"	TRCDC075SS316CL	TRCDC075ALSSLCL	TRCDC075BRCL
25	1"	TRCDC100SS316CL	TRCDC100ALSSLCL	TRCDC100BRCL
32	1-1/4"	TRCDC125SS316CL	TRCDC125ALSSLCL	TRCDC125BRCL
40	1-1/2"	TRCDC150SS316CL	TRCDC150ALSSLCL	TRCDC150BRCL
50	2"	TRCDC200SS316CL	TRCDC200ALSSLCL	TRCDC200BRCL
65	2-1/2"	TRCDC250SS316CL	TRCDC250ALSSLCL	TRCDC250BRCL
80	3"	TRCDC300SS316CL	TRCDC300ALSSLCL	TRCDC300BRCL
100	4"	TRCDC400SS316CL	TRCDC400ALSSLCL	TRCDC400BRCL
125	5"	TRCDC500SS316CL	TRCDC500ALSSLCL	TRCDC500BRCL
150	6"	TRCDC600SS316CL	TRCDC600ALSSLCL	TRCDC600BRCL
200	8"	*TRCDC800SS316CL	*TRCDC800ALSSLCL	-

*Su richiesta / on request

Versione in alluminio con leve in SS / Aluminum version with SS handles

Guarnizione di fornitura: NBR / Supply gasket: NBR

Tipo Type		Dimension										
		Size (mm)	1/2'	3/4'	1'	1-1/4'	1-1/2'	2'	2-1/2'	3'	4'	6'
DC		L1	4.5	6.35	6.5	7.14	7.14	7.14	7.14	7.14	7.14	9.5
		L2	25.5	27	33	38	41	45	49	49	48	55
		L3	37	43	49	55	57	66	69	71	73	73
		A1	33.5	40.5	46.5	55	63.5	73.5	88	104.5	134.5	195
		A2	24.5	32.7	37.8	46	54	64	76.8	92.2	120.5	177
		A3	26	36.12	38.5	50.8	57.2	66	78	96	124	181

CAMLOCK TYPE DP

TAPPO MASCHIO / DUST PLUG



DN mm	DIMENSIONE POLLICI SIZE (IN)	CODICE / PART NUMBER SS316	CODICE / PART NUMBER Alluminio / Aluminum	CODICE / PART NUMBER Ottone / Brass
13	1/2"	TRCDP050SS316CL	TRCDP050ALCL	TRCDP050BRCL
20	3/4"	TRCDP075SS316CL	TRCDP075ALCL	TRCDP075BRCL
25	1"	TRCDP100SS316CL	TRCDP100ALCL	TRCDP100BRCL
32	1-1/4"	TRCDP125SS316CL	TRCDP125ALCL	TRCDP125BRCL
40	1-1/2"	TRCDP150SS316CL	TRCDP150ALCL	TRCDP150BRCL
50	2"	TRCDP200SS316CL	TRCDP200ALCL	TRCDP200BRCL
65	2-1/2"	TRCDP250SS316CL	TRCDP250ALCL	TRCDP250BRCL
80	3"	TRCDP300SS316CL	TRCDP300ALCL	TRCDP300BRCL
100	4"	TRCDP400SS316CL	TRCDP400ALCL	TRCDP400BRCL
125	5"	TRCDP500SS316CL	TRCDP500ALCL	TRCDP500BRCL
150	6"	TRCDP600SS316CL	TRCDP600ALCL	TRCDP600BRCL
200	8"	*TRCDP800SS316CL	*TRCDP800ALCL	-

*Su richiesta / on request

Tipo Type		Dimension									
		Size (mm)	1/2'	3/4'	1'	1-1/4'	1-1/2'	2'	2-1/2'	3'	4'
DP	L1	33	37	41	51	51	61	65	59	58	70
	L2	25	25	29	37	37	45	46	44	44	47
	A1	15	23.5	27	34	39	38	64	75	103	151
	A2	23.84	32.1	36.8	45.1	53.3	63	75.8	91.5	119.5	176

SEMI-GUSCI EN14420-3 (DIN2817)

SAFETY CLAMPS EN14420-3 (DIN 2817)



MATERIALI: AISI 316 ED ALLUMINIO
DIMENSIONI: DA DN 15 A DN 100.
PRESSIONE D'ESERCIZIO MASSIMA: 25 BAR (375PSI)
TEMPERATURA D'IMPIEGO MASSIMA: +65°C (+149°F)
VITI: TCEI
 DA DN15 A DN40: M6x20
 DA DN50 A DN80: M8x25
 DN100: M10x40

MATERIAL: SS316 - ALUMINUM
DIMENSIONS: FROM DN 15 TO DN 100
MAXIMUM WORKING PRESSURE: 25 BAR (375PSI)
MAX TEMPERATURE MASSIMA: +65°C (+149°F)
SCREW: SOCKED HEAD
 FROM DN15 TO DN40: M6x20
 FROM DN50 TO DN80: M8x25
 DN100: M10x40

INCH	DN mm	ØE TUBO mm OD HOSE mm	RANGE mm	CODICE / PART NUMBER Alluminio / Aluminum	CODICE / PART NUMBER AISI 316 / SS316
1/2"	15	13X5	22-24	TRC050ALSC	TRC050SS316SC
3/4"	20	19X6	30-33	TRC075ALSC	TRC075SS316SC
1	25	25X6	36-39	TRC100ALSC	TRC100SS316SC
1-1/4"	32	32X6	43-46	TRC125ALSC	TRC125SS316SC
1-1/2"	40	38X6.5	50-52	TRC150ALSC	TRC150SS316SC
2"	50	50X8	64-67	TRC200ALSC	TRC200SS316SC
2-1/2"	65	63X8	78-82	TRC250ALSC	TRC250SS316SC
3"	80	75X8	88-93	TRC300ALSC	TRC300SS316SC
3"	80	75X10	94-97	TRC300ALSC02	-
4"	100	100X8	114-119	TRC400ALSC	TRC400SS316SC

ALTRI PRODOTTI DISPONIBILI SU RICHIESTA

OTHER PRODUCTS AVAILABLE ON REQUEST

CAMLOCK DIN2828 - EN 14420-7



CAMLOCK AUTO-LOCK



CAMLOCK REDUCER



ACCESSORI

ACCESSORIES

LEVE / HANDLES

Completo di pin.

With pin.



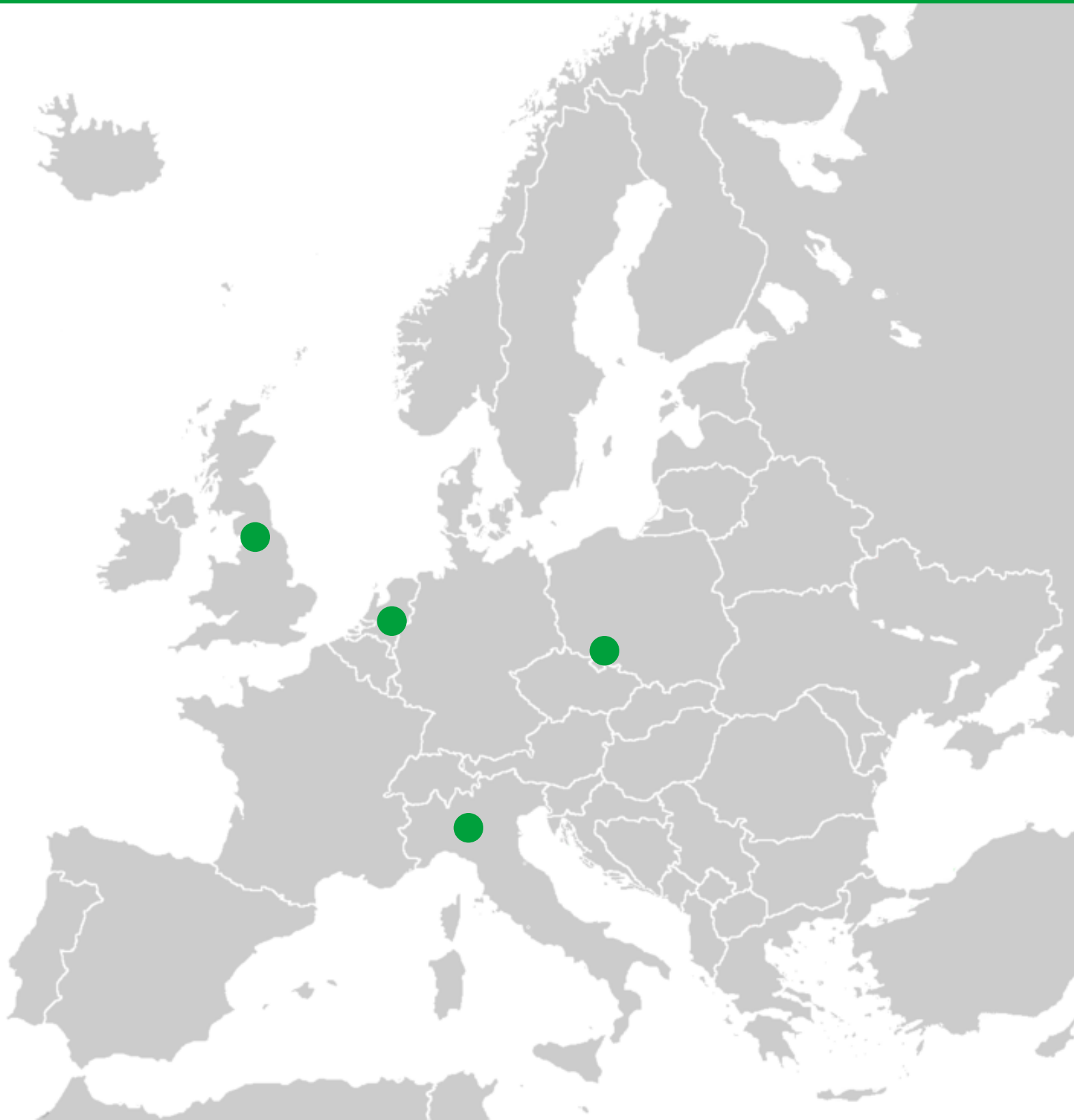
GUARNIZIONI / GASKETS

EPDM, NBR, VITON, SILICONE



CATENELLA DI SICUREZZA / CHAIN





TRIDON EMEA srl
MILAN, ITALY

TRIDON EMEA b.v.
GORREDIJK, THE NETHERLANDS

TRIDON EMEA sp. z.o.o.
KUDOWA, POLAND

TRIDON EMEA Ltd.
WEST YORKSHIRE, UK

NOTE



Tridon EMEA

Via dell'Artigianato, 1
20070 Cerro al Lambro (MI)

Tel. +39 02 9803211

support@clamp.it

www.clamp.it